



Leeds
Neighbourhood
Index

Key Drivers

- To make information more accessible and improve understanding of issues affecting neighbourhoods across the City
- To develop a shared understanding of neighbourhood needs between partners
- To provide a robust evidence based approach to formulating policies and allocating resources
- To improve performance management at a local level by monitoring the impact of key services on a range of agreed indicators

Aims

- To develop an Index to:
 - provide an overall picture of the relative 'health' of all neighbourhoods across the city
 - be used to measure the relative success of neighbourhoods across the city over time
 - provide a mechanism to measure the combined impact of interventions in a local area

Defining the Neighbourhoods

Middle Super Output Areas (MSOAs) have been used as the basis for the Index. **There are 108 MSOAs in the city.**

- They provide a “ready made” set of boundaries for which a range of data is easily available
- They are recognised by all partner agencies
- They are of a comparable size in terms of population (each containing approximately 7,000 people)
- They meet Government guidance that a “neighbourhood” should contain between 5,000 to 10,000 people

Structure of the Index

- A multiple domain and indicator based Index
- Reports on a basket of indicators (26 in total) grouped into 7 domains
- Generates a neighbourhood score for each indicator and for each domain which can be compared to the averages for the city
- Generates a combined single Neighbourhood Index score

Domains and Indicators

<p>Economic Activity: Job Seekers Allowance, Income Support (Lone Parents) Incapacity Benefit</p>	<p>Health: Circulatory Disease Mortality (under 75s) Cancer Mortality (under 75s) Low Birthweight</p>
<p>Low Income: Children in workless households Working households claiming LCC benefits Older age households claiming LCC benefits Debt (count of LCC liability orders)</p>	<p>Education: Persistent absenteeism Foundation Stage attainment KS2 attainment KS4 attainment NEETs</p>
<p>Housing: Average house prices Price to Income Ratio Housing turnover Empty properties</p>	<p>Community Safety: Crimes against individuals Acquisitive property crime Environmental property crime & disorder Other Community Disorders</p>
<p>Environment: Flytipping Graffiti Waste Issues</p>	

Outputs

- The production of an annual set of neighbourhood profiles to an agreed template
- Set of city-wide maps (an Atlas of Local Conditions)
- Set of tables showing the comparative position of neighbourhoods across the range of indicators and within each domain
- An “Annual Report” providing commentary on the results

Sample Area Profile



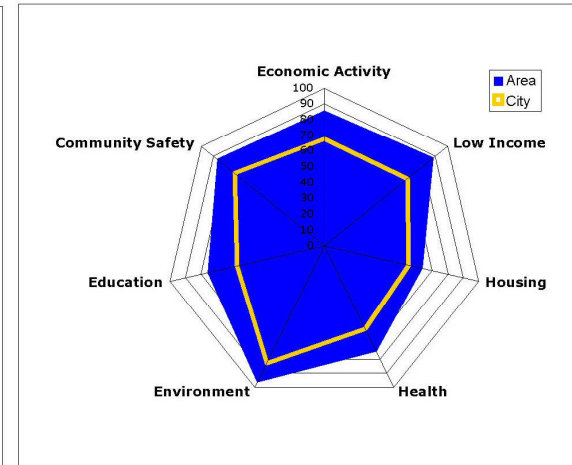
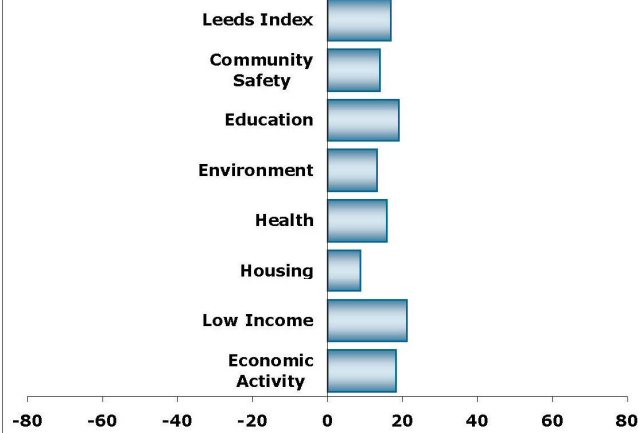
Leeds Neighbourhood Index

Domain Summary				
2009	Rank	Score	Leeds Score	Gap
Economic Activity	82	85.66	67.44	18.22
Low Income	87	88.38	67.29	21.09
Housing	82	63.39	54.69	8.70
Health	86	74.61	58.78	15.83
Environment	100	96.28	83.05	13.22
Education	83	75.46	56.46	19.00
Community Safety	77	86.91	72.93	13.97
Leeds Index	85	82.60	65.73	16.87

Key Statistics	Profiled Area		Leeds M.D.	
	Number	Rate	Number	Rate
Population 2007 M.Y.E	7,507		761,124	
Households Liable for Council Tax	3,390		313,816	
BME Population	280	3.80%	77,482	10.83%
Foundation Stage	35	51.47%	3,509	46.81%
Key Stage 2	46	85.19%	5,421	71.06%
Key Stage 4	40	64.52%	3,736	46.29%
Persistent Absenteeism	14	4.22%	3,063	8.13%
NEET	1	1.64%	567	6.94%
Crimes Against the Person	90	N/A	27,907	N/A
Acquisitive Property Crime	320	N/A	47,201	N/A
Environmental Crimes	98	N/A	17,557	N/A
Community Disorders	294	N/A	54,672	N/A
Average Purchase Price	£216,200	N/A	£178,400	N/A
Price / Income Ratio	5.50	N/A	5.20	N/A
Housing Turnover	332	9.46%	42,360	12.80%
Empty Homes (90+ days)	170	4.94%	22,907	6.92%
Children in Workless Households	36	2.97%	24,034	18.04%
Households Receiving In-Work Benefits	41	1.21%	10,774	3.43%
60+ Households in Receipt of Benefits	233	6.87%	33,358	10.63%
Court Payment Orders	112	N/A	20,724	N/A
Job Seekers' Allowance	130	2.69%	23,281	4.66%
Incapacity Benefit	190	3.93%	30,120	6.03%
Lone Parent Income Support	20	0.41%	9,500	1.90%
Circulatory Disease Mortality	N/A	68.01	N/A	87.81
Cancer Mortality	N/A	134.11	N/A	119.43
Low Birthweight	N/A	3.34	N/A	8.07
Fly Tipping	29	N/A	9,656	N/A
Graffiti	5	N/A	2,465	N/A
Waste Issues	9	N/A	5,321	N/A

Ethnicity (2001 Census)	Profiled Area		Leeds M.D.	
	Number	Rate	Number	Rate
White British	7,079	96.20%	637,872	89.17%
Irish	39	0.53%	8,532	1.19%
Black Caribbean & White	6	0.08%	4,577	0.64%
Black African & White	0	0.00%	867	0.12%
Asian & White	19	0.26%	2,541	0.36%
Indian	62	0.84%	12,296	1.72%
Pakistani	22	0.30%	15,064	2.11%
Bangladeshi	0	0.00%	2,531	0.35%
Black Caribbean	9	0.12%	6,737	0.94%
Black African	0	0.00%	2,404	0.34%
Chinese	11	0.15%	3,468	0.48%

E02002368: Calverley, Farsley North

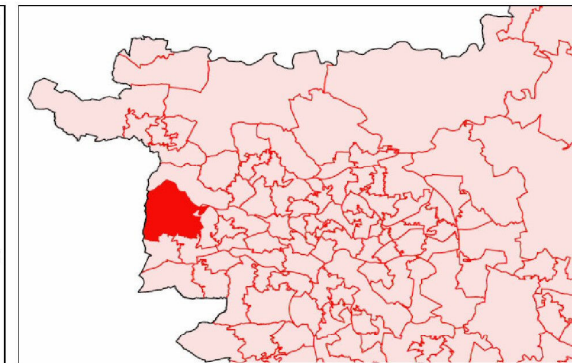


Located in the Outer West this area is bounded by the River Aire to the north and the Leeds Bradford boundary line to the west. The area contains all of Calverley and surrounding rural areas and the north of Farsley. It contains approximately 7,300 people living in 3,500 households. The age breakdown shows a slightly higher than average proportion of older people. The population is predominantly White British. 84% of households are in owner-occupation. Semi-detached housing accounts for 38.5% of the stock and terraced housing for a further 33%. 75% of properties are classified in Council Tax Bands B-D. Key services located in the area include: Calverley C of E Voluntary Controlled Primary School; Calverley Parkside Primary School; Farsley Springbank Junior School; Farsley Recreation ground; Calverley Cricket ground; Calverley Golf Club; Woodhall Hills Golf Club; Calverley Library and Calverley Post Office.

Other points of interest include: Woodhall Hills Hamlet; Calverley Woods; Calverley Cutting and Leeds Liverpool Canal.

A Conservation area review has been completed for Calverley, and Woodhall Hill and Farsley planned to be started soon.

There is a Farsley Village Design Statement.



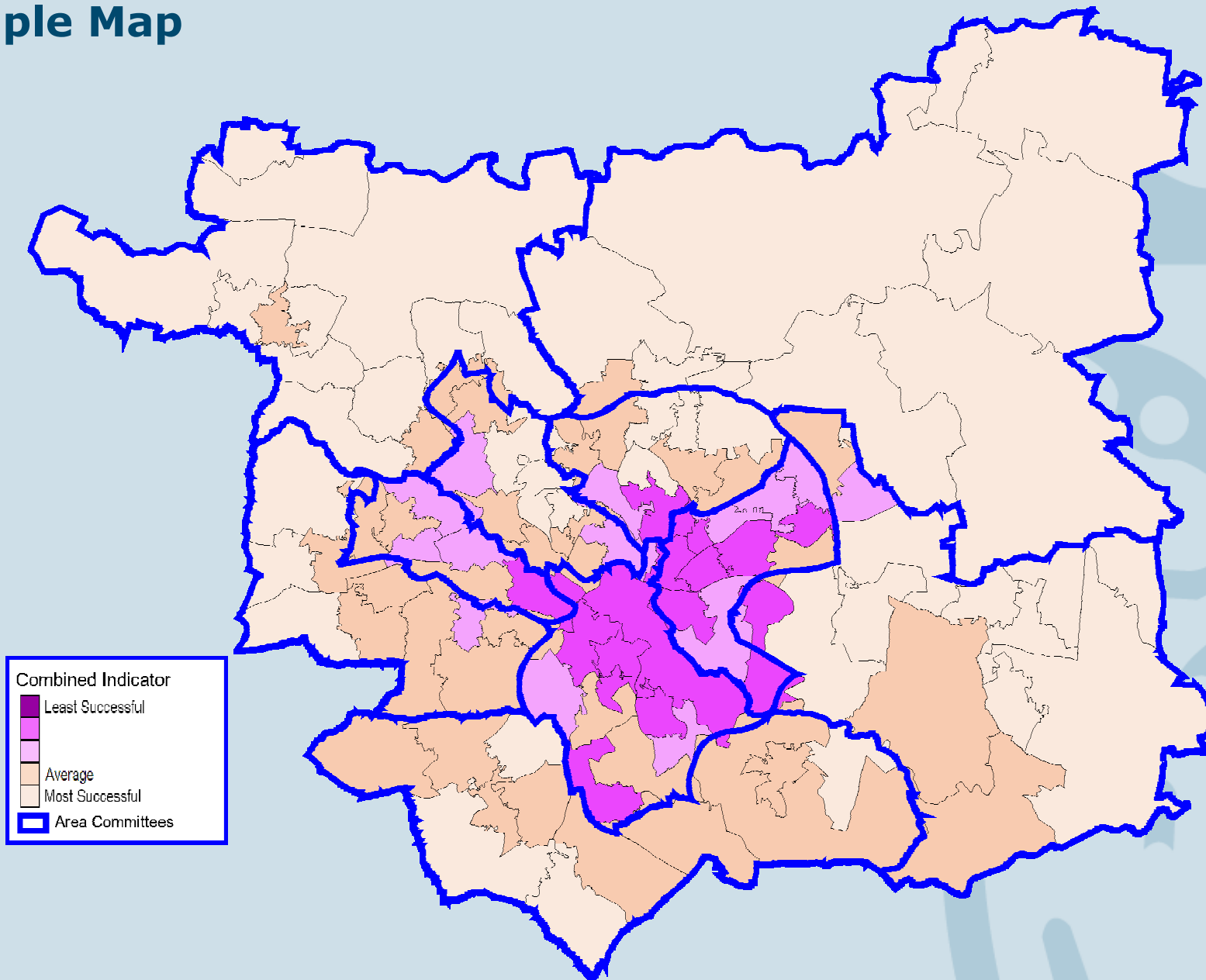
Faith (2001 Census)	Profiled Area		Leeds M.D.	
	Number	Rate	Number	Rate
Christian	5,652	76.85%	492,656	68.87%
Buddhist	7	0.10%	1,603	0.22%
Hindu	25	0.34%	4,189	0.59%
Jewish	6	0.08%	8,233	1.15%
Muslim	40	0.54%	21,385	2.99%
Sikh	41	0.56%	7,601	1.06%

Disability (2001 Census)	Profiled Area		Leeds MD	
	Number	Rate	Number	Rate
Limiting Long-Term Illness	1,163	15.80%	128,647	17.98%

Adult Social Care Community Based Service Users	Profiled Area		Leeds MD	
	Number	Rate	Number	Rate
Learning Disabilities	16	N/A	1,379	N/A
Mental Health	21	N/A	2,067	N/A
Physical Disability	76	N/A	8,141	N/A
Other Reasons	3	N/A	688	N/A

Age (2007 M.Y.E.)	Profiled Area		Leeds MD	
	Number	Rate	Number	Rate
Children	1,211	16.13%	133,217	17.50%
Working Age	4,834	64.39%	499,422	65.62%
Older People	1,462	19.48%	128,485	16.88%

Sample Map



Outer West

On a best fit basis the Outer West area contains 10 MSOAs

- Calverley / Farsley North
- Farsley South
- Thornbury
- Swinnow
- Pudsey – Waterloos / Tyersals / Westroyds
- Farnley
- Pudsey Central / Littlemoor
- Gamble Hill / Moorside
- Upper Wortley
- New Farnley / Lower Wortley

Leeds Index

In general the MSOAs in Outer West experience outcomes that are in line with or better than the averages for the city, however **Farnley** consistently has significantly poorer outcomes

In addition there are a number of other areas that experience specific issues

Specific issues

Community Safety

Farsley South and Pudsey Central / Littlemoor have poorer outcomes with regard to “Acquisitive Property Crime”

Swinnow has poorer outcomes with regard to Environmental Crimes & Disorders

Economic Activity

Gamble Hill / Moorside has a higher than average proportion of Job Seekers Allowance claimants

Education

Gamble Hill / Moorside has a higher rate of persistent absenteeism, poorer outcomes at Key Stage 2, and a higher level of NEETs

Thornbury, Upper Wortley and New Farnley / Lower Wortley all experience poorer outcomes at the Foundation Stage

Environment

Upper Wortley has a higher than average number of “Waste Issues”

Specific issues

Health:

Gamble Hill / Moorside has poorer outcomes in relation to Circulatory Disease Mortality

Farsley South and Pudsey Central / Littlemoor both have poorer outcomes in relation to Cancer Mortality

Upper Wortley has poorer outcomes in relation to Low Birthweight

Low Income:

Swinnow and Pudsey Central / Littlemoor both have higher than average proportions of older person households that are in receipt of Housing / Council Tax benefits

Using the Neighbourhood Index

- Standard outputs to meet growing demand for small area data to better describe and understand neighbourhoods
- 'Tin opener' for other studies / research
- Evidence base to inform policy formulation, priority setting and resource allocation
- Improving performance management by monitoring impact of key services on a locality

Forward Work Programme

- Gather feedback / evaluate the original outputs
- Reformatting the area profiles (improving the map and incorporating time series / direction of travel information)
- Explore the feasibility of including additional indicators (particularly in the Economic Activity, Environment and Health domains)
- Annual data refresh (summer 2010)